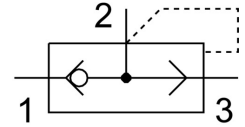


# Quick exhaust valve SE-1/4-B

Part number: 9686

FESTO



## Data sheet

Feature	Value
Type code	SE
Valve function	Quick exhaust
Pneumatic connection 1	G1/4
Pneumatic connection 2	G1/4
Type of mounting	Screw-in
Standard nominal flow rate exhaust air 6→5 bar	1200 l/min
Standard nominal flow rate pressurization 6→5 bar	960 l/min
Operating pressure	0.5 bar ... 10 bar
Ambient temperature	-20 °C ... 75 °C
Housing material	Die-cast zinc
Operating medium	Compressed air as per ISO 8573-1:2010 [7:-:-]
Nominal width	7 mm
Mounting position	Any
Symbol	00991459
Information on operating and pilot media	Operation with oil lubrication possible (required for further use)
Temperature of medium	-20 °C ... 75 °C
Product weight	100 g
Pneumatic connection 3	G1/4
Seals material	NBR